

The Native Plant Network: Pine Rockland Factsheet

Miami's **pine rockland** plant community is a diverse mix of tropical and temperate species. With high biodiversity, pine rocklands support over 400 native plant species and dozens of native animals. Some of these species are **endemic**, meaning they are found nowhere else in the world.

Historically, the pine rocklands of Miami were found on the **Miami Rock Ridge**, and extended continuously from downtown Miami south, and west into Everglades National Park, covering a total of 185,000 acres. Currently, less than 2% of pine rockland remains in urban Miami-Dade County, outside of the National Park (Bradley, 2005). Pine rocklands are also found in Monroe County (primarily on Big Pine key) and Collier County (in Big Cypress National Preserve), as well as in The Bahamas.



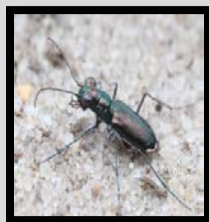
A pine rockland preserve in Miami's Richmond area

Pine rocklands are considered to be **globally critically imperiled** by Florida Natural Areas Inventory due to "extreme rarity and vulnerability to extinction." The primary cause of imperilment has been **development** for homes, businesses, farms, nurseries, and roads. **Invasive species** are a significant secondary threat, as they can displace natives or disrupt their biology through disease, predation, or ecosystem alterations. **Fragmentation** of remaining pine rocklands is another major threat; isolated populations have reduced gene flow (via pollen) and dispersal (of seeds). It also increases edge effects, whereby the exterior of a pine rockland is highly subject to negative impacts from invasive species and human activities, and much less likely to experience **wildfires**, upon which the community depends.

Species endemic to South Florida pine rocklands: (* denotes Miami endemics)

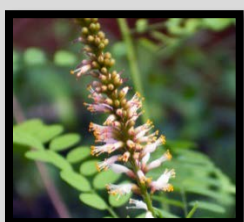
Animals

Bartram's hairstreak
Florida leafwing
Miami tiger beetle*



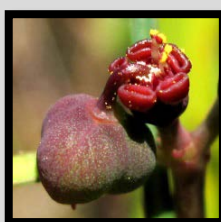
Plants

Blodgett's wild mercury
Brickell bush*
Carter's flax*
Crenulate lead plant*

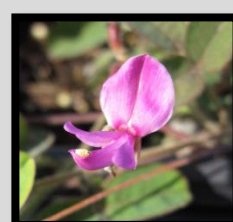


Deltoid spurge*

Florida prairie clover*
Goulds wedge sandmat*
Keys partridge pea
Keys wedge sandmat
Pineland poinsettia



Pineland lantana
Pineland sandmat
Rocklands noseburn
Sand flax
Small's milkpea*



What Can YOU Do to Help Our Remaining Pine Rocklands?

- 1 - Join Fairchild's Native Plant Network (contact NPN@fairchildgarden.org)
- 2 - Support preservation and prescribed fire in pine rocklands.
- 3 - Encourage your friends, family, school, or business to plant pine rockland plants.
- 4 - Volunteer with Miami's EEL Program (www.miamidade.gov/environment/endangered-lands-volunteer.asp)
- 5 - Visit a pine rockland! (E.g: Rockdale Preserve, Larry & Penny Thompson Park or "Long Pine Key" in Everglades NP).

